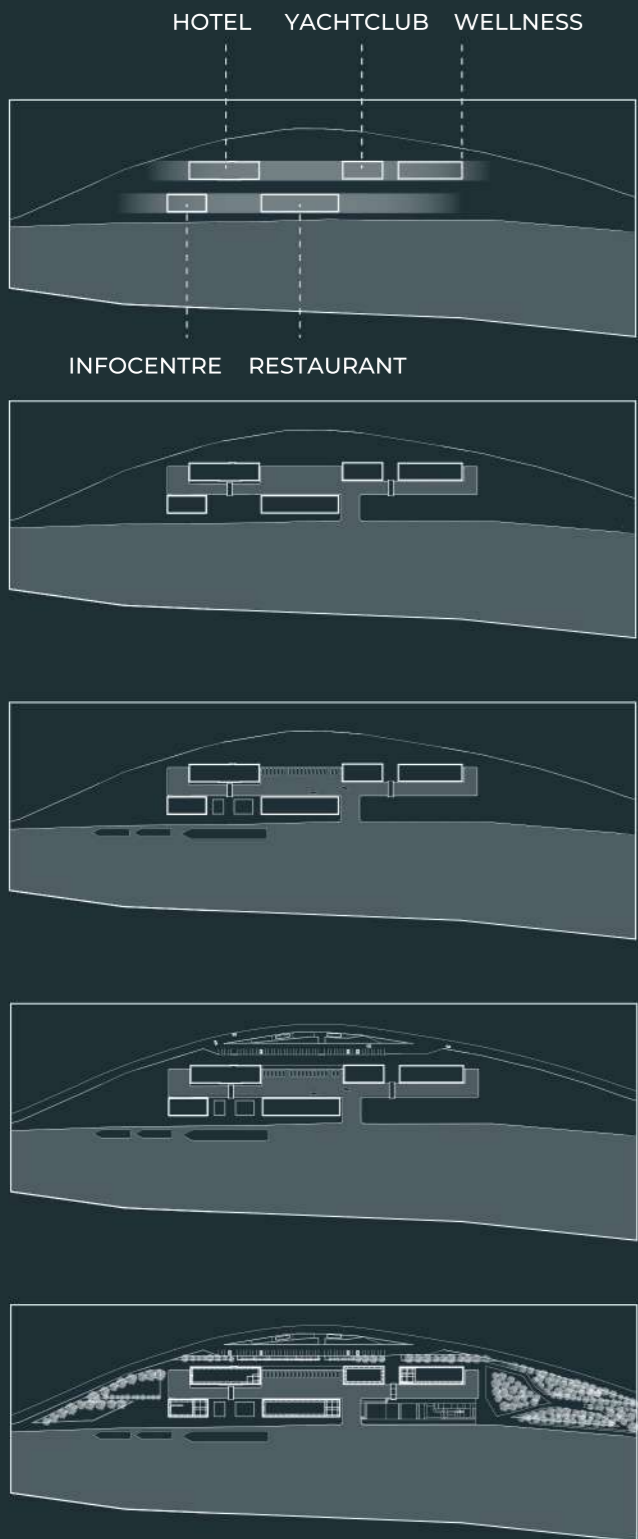


LINEARITY - RELATIONS



1. linear composition of buildings aligned along two main axes based on their function
2. straight bay connecting each individual building and creating the centerpiece of the project
3. position of docks for 20 smaller vessels in the center of the bay and position of the dock for larger vessels at the edge of the property
4. the parking for 50 cars and 4 buses for tourists and residents of the city
5. park, green spaces, paved areas and areas for free time activities

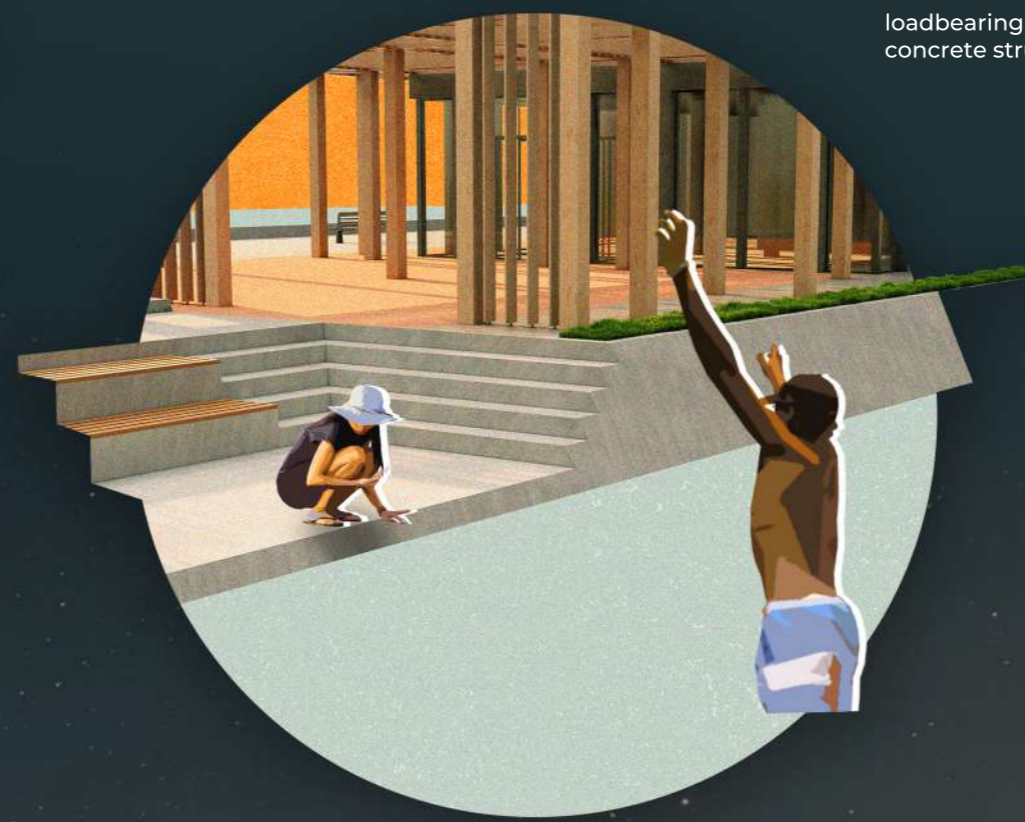
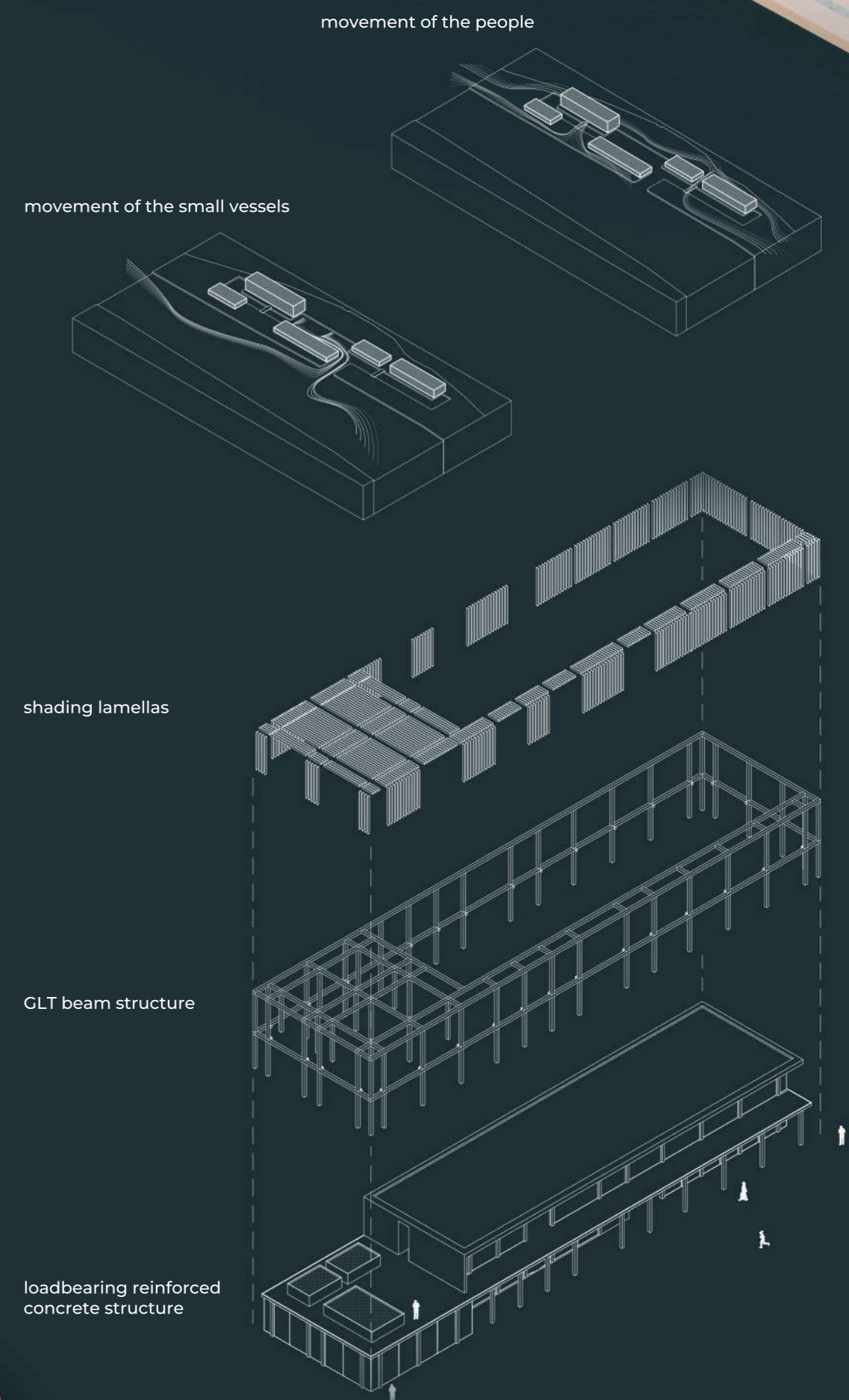
ÚSTÍ NAD LABEM MARINA

The linear composition in our project is mainly determined by the shape of the given plot. Thanks to its length, we were able to stretch all the buildings along the bank of the Elbe River, allowing them equal contact with the water, enough of space and maximum views of the river and its surroundings. The individual units are aligned along two axes, with their position determined by the relations between the buildings and their functions. The design consists of 5 main buildings - accommodation facility, restaurant, yachtclub, wellness centre in combination with fitness centre and infocentre combined with a waiting room. The division of functions between the units also allows for the enclosure of spaces that are underutilized in the off-season.

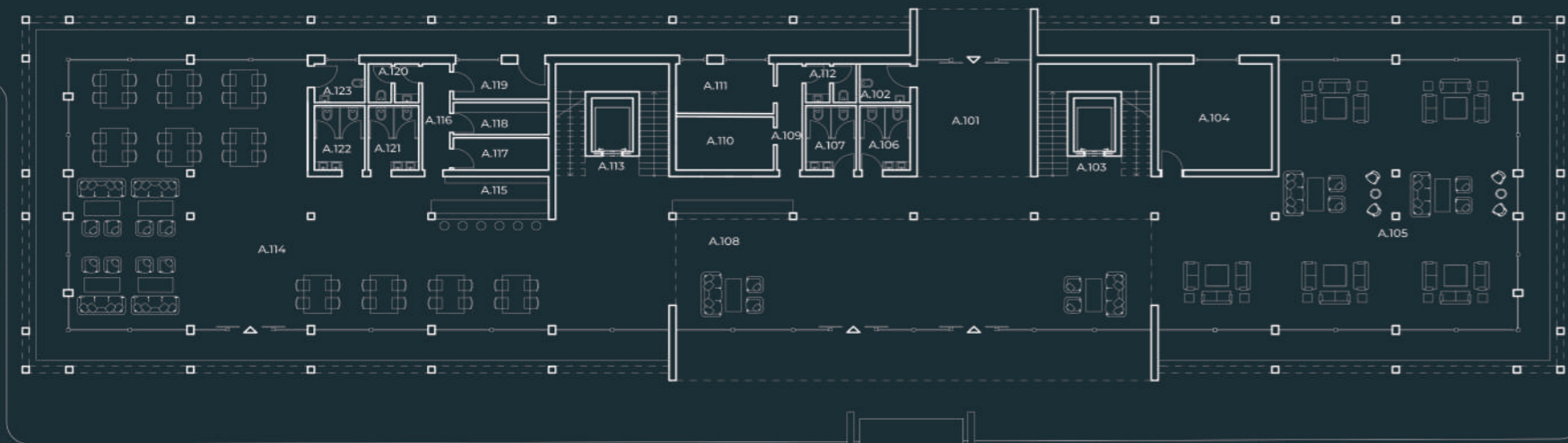
At the centre of the site, and indeed of the whole design, is a straight bay which forms a kind of a spine to the project, linking all the elements into a single whole. The bay flows between the buildings, allowing all parts of the marina to come into contact with the water.

The bay also contains a dock for smaller vessels, where boats pass directly between the buildings and complete the marina atmosphere. The berth for larger vessels is located at the main river bank at the edge of the property so that larger boats do not obstruct the view.

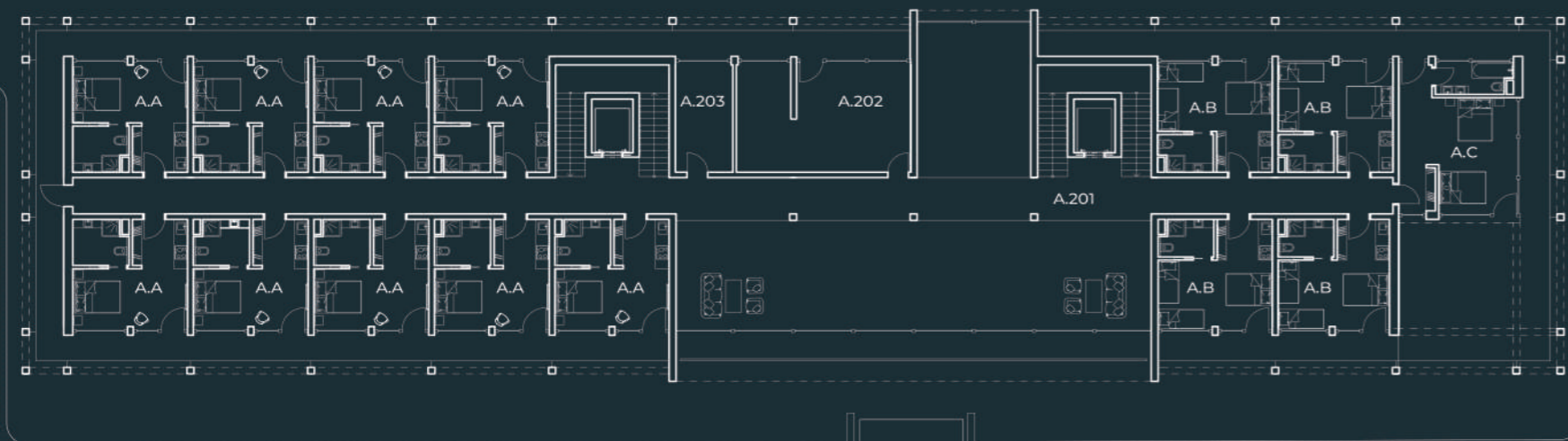
The remainder of the site consists of a park and green spaces, paved areas and areas for free time activities. The aim of the design was to create new and unique places for leisure not only for sailors, but also for tourists and residents of Ústí nad Labem.



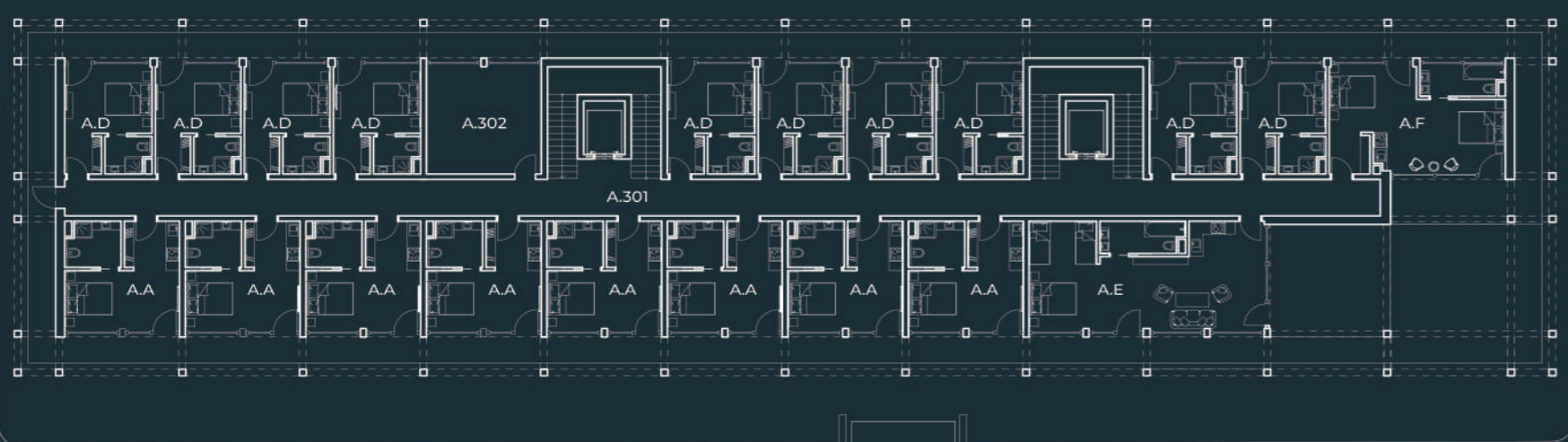
GROUND FLOOR



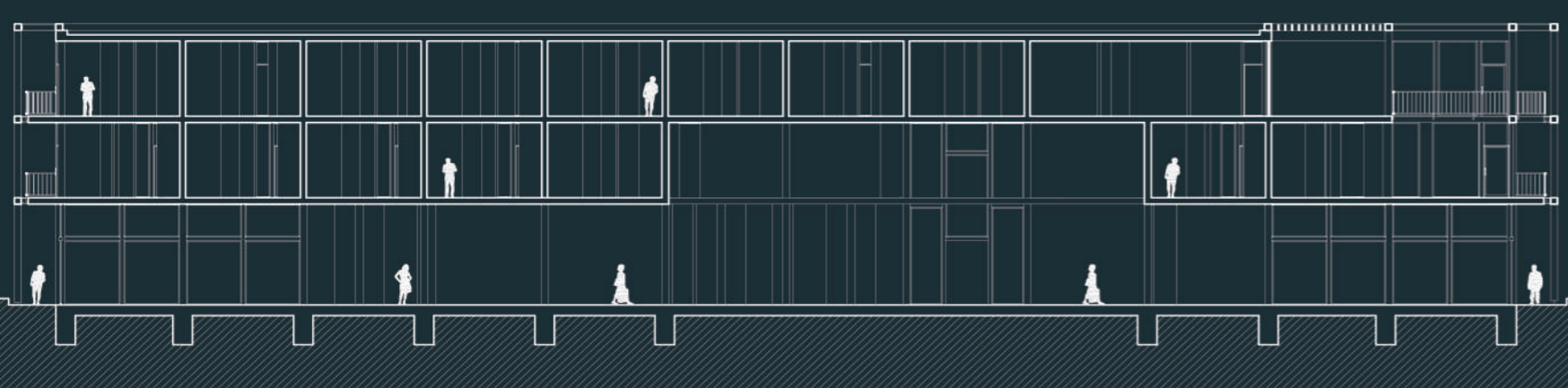
FIRST FLOOR



SECOND FLOOR



CROSS SECTION



All buildings have a uniform structural foundation. It is a combined RC frame in combination with reinforcing walls - allowing for open facades and complete freedom in the internal structure of the building. They have a pre-set facade made of self-loadbearing CLT beams, that provide airflow and cooling to the structure. The timber for the facade was chosen to blend in with its surroundings and not to disturb the natural landscape. At the same time, it also creates space for balconies and terraces, or for ground floor promenades, thus expanding the living space in all buildings. As the buildings themselves occupy a large area, each of them has an extensive green roof along with photovoltaic panels. The result is sustainable low-energy buildings that respect the surroundings and the environment.

HOTEL

Next, we decided to break down the hotel building more on the poster, as it is the largest object of our project. The hotel is located in the southern part of the bay right next to the dock for smaller vessels. Its position on the property is determined by its easy accessibility, both for users of smaller vessels and passengers of large cruise ships, as well as from the parking lot, for visitors and supplying. At the same time, it is positioned so that there is maximum view of the surrounding landscape from its rooms.

On the ground floor there is a reception area with a hotel café, which also acts as a breakfast serving area, and a hotel lobby. There is also a luggage room and staff facilities.

Most of the space on first and second floor is divided into a total of 34 rooms with a capacity of 82 customers. The hotel provides a wide range of rooms, smaller tourist rooms for 2 or 4 people, hotel rooms for 2 and even suites for 4 people.

Each room has access to its own outdoor balcony, the larger suites also have more spacious outdoor terraces. The outdoor space of each balcony and terrace is also filled with greenery. The pre-set facade also acts as a shading screen and the rotating wooden slats can be adjusted to suit the needs of the customers.

